



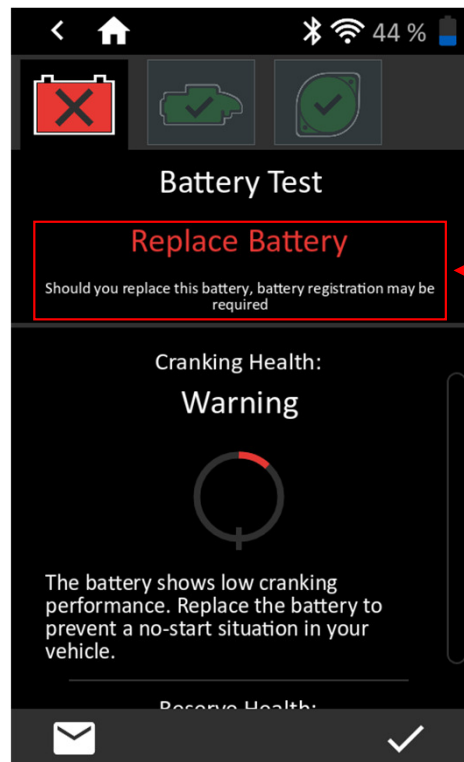
Advancing
Battery Management

VIT-100

Screen Flow Overview



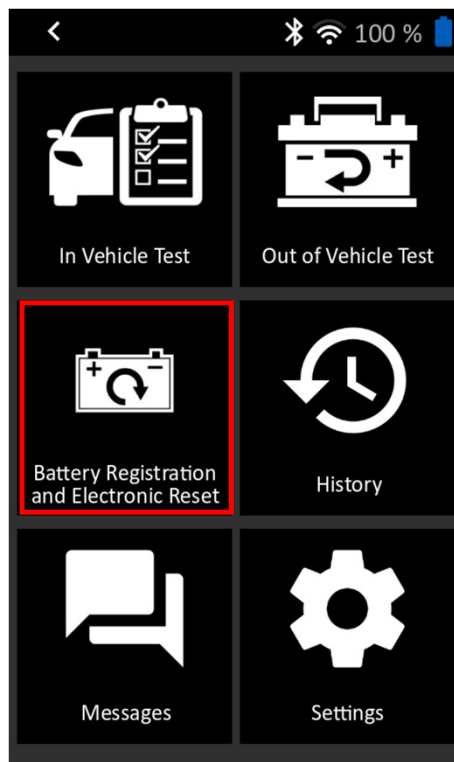
Before Starting...



- When should I attempt to complete a battery registration?
 - When a JDT In Vehicle Battery test gives a Replace decision and the note “Should you replace this battery, battery registration may be required”
- What do I need to complete a battery registration?
 - JDT-1
 - VIT-100
 - Vehicle’s VIN (to scan with the JDT)
 - The Ah or RC from the old battery being replaced
 - The Ah or RC and the CCA of the new battery being installed
- Keys to Success:
 - Make sure VIT is paired with JDT BEFORE attempting to perform a battery registration
 - Keep the old battery nearby until battery registration is complete
 - Do not connect the new battery to the vehicle until instructed to do so by the JDT-1
 - Do not connect the VIT-100 to the OBDII port until instructed to do so by the JDT-1
 - If the first attempt fails, ensure the vehicle set up instructions are being followed exactly as stated

Battery Registration Process

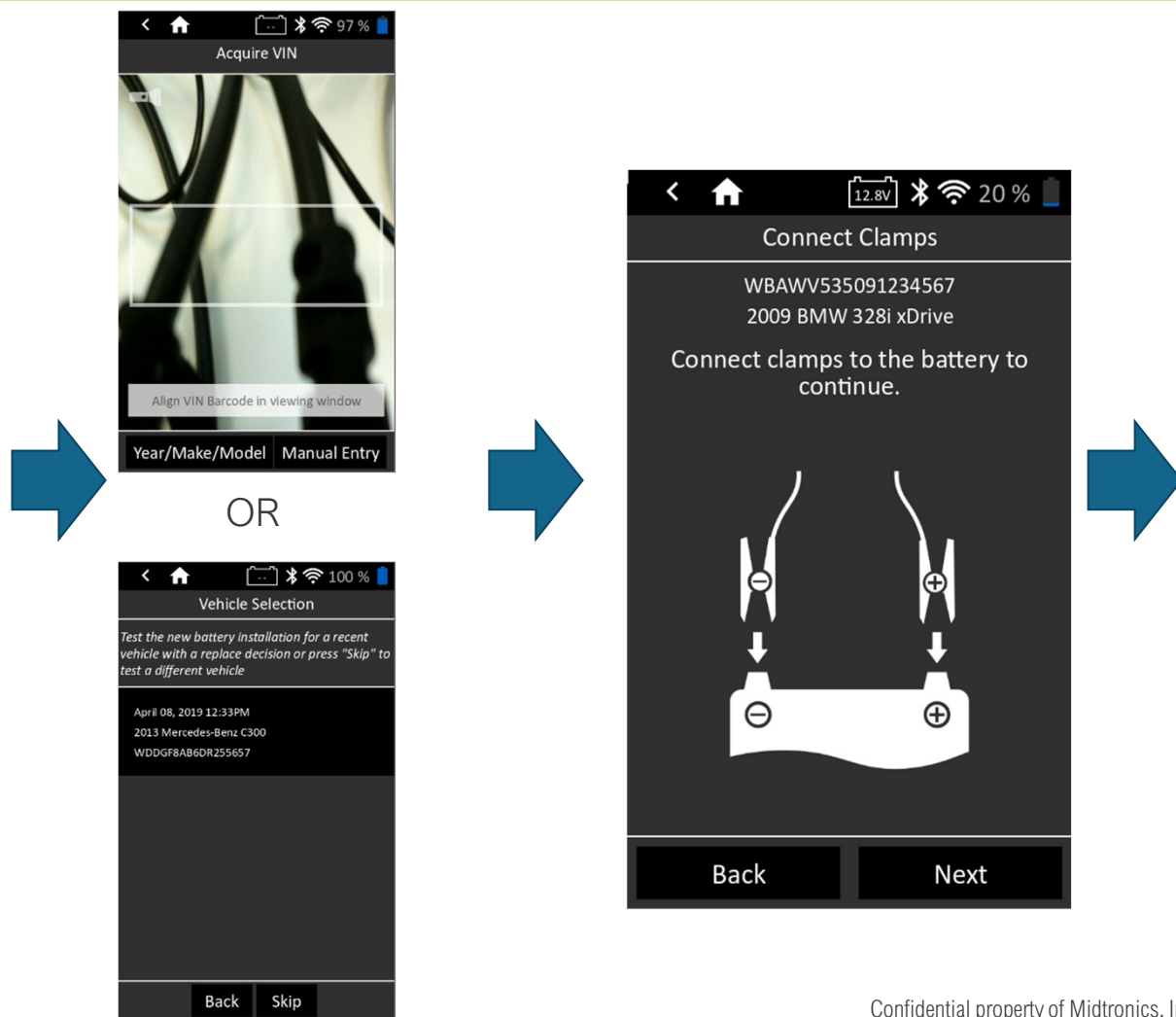
- Tap “Battery Registration and Electronic Reset” App
- Follow the on-screen instructions prior to starting:
 - Do not plug in the VIT
 - Do not connect the new battery inside the vehicle



Battery Registration Process

- Select the vehicle that requires battery registration
 - Option 1: Scan the VIN
 - Option 2: Manually enter the VIN
 - Option 3: Select the vehicle from a list of recent replace decisions
- Connect the Clamps to the new battery being installed

DO NOT CONNECT THE BATTERY TO THE VEHICLE



Confidential property of Midtronics, Inc.

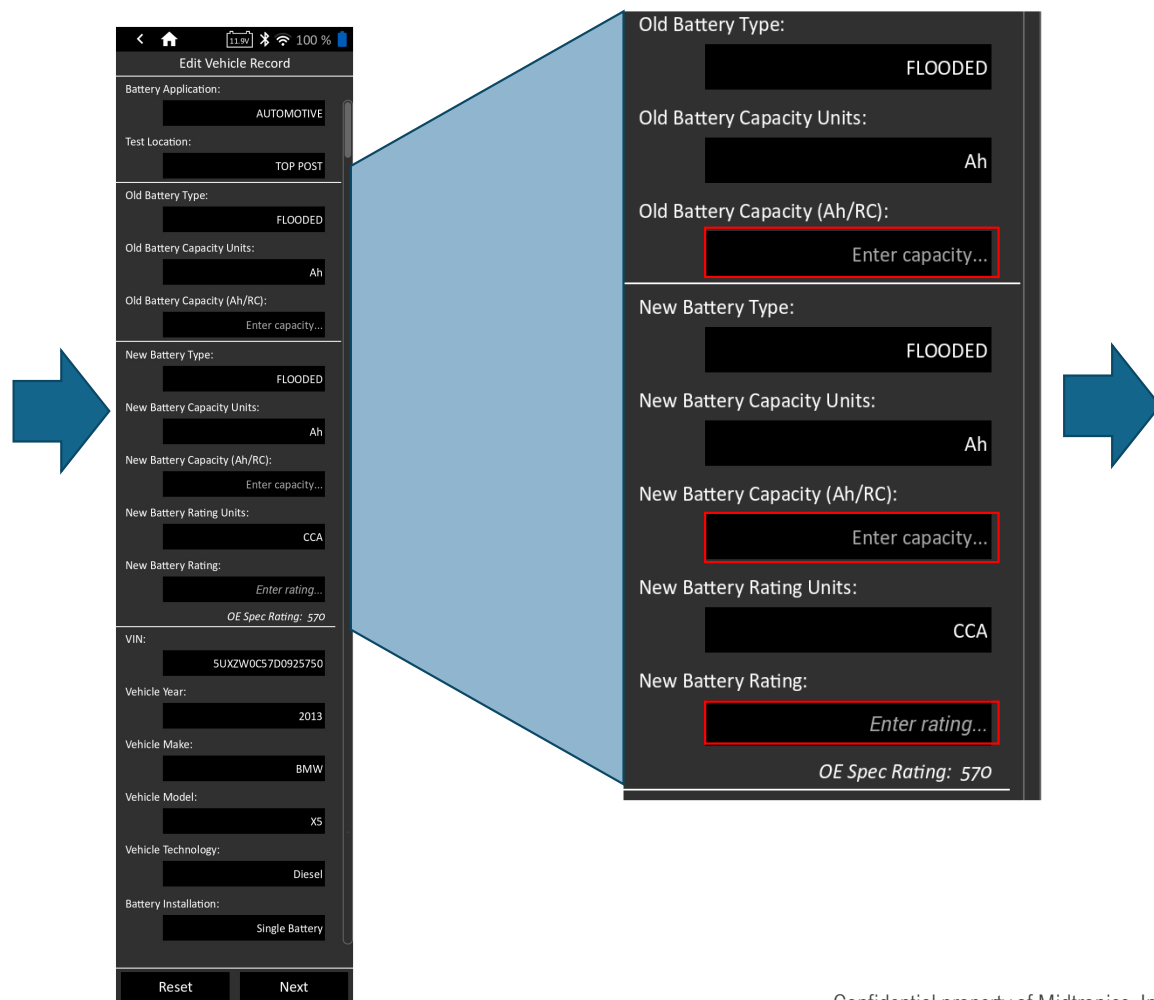
Battery Registration Process

- Review and Edit the Vehicle Record

- Old Battery
 - Confirm battery chemistry
 - Enter either Ah or RC**
- New Battery
 - Confirm battery chemistry
 - Enter either Ah or RC**
 - Enter CCA rating
- Confirm Vehicle information

- Tap Next

** When entering the Ah or RC, confirm the correct Capacity Units are shown in the box above



The diagram illustrates the Battery Registration Process flow. It starts with a mobile app screen titled "Edit Vehicle Record" showing various fields for vehicle and battery information. A large blue arrow points from this screen to a detailed view of the battery registration fields. This detailed view is divided into two sections: "Old Battery" and "New Battery". Each section has a dropdown for "Type" (set to "FLOODED"), a dropdown for "Capacity Units" (set to "Ah"), and a text input for "Capacity (Ah/RC)" with a red box around the "Enter capacity..." placeholder. Below these are fields for "Rating Units" (set to "CCA") and "Rating" (with a red box around the "Enter rating..." placeholder). At the bottom, there is an "OE Spec Rating" of 570. A final blue arrow points from this detailed view to the right, indicating the next step in the process.

Edit Vehicle Record

Battery Application: AUTOMOTIVE

Test Location: TOP POST

Old Battery Type: FLOODED

Old Battery Capacity Units: Ah

Old Battery Capacity (Ah/RC): Enter capacity...

New Battery Type: FLOODED

New Battery Capacity Units: Ah

New Battery Capacity (Ah/RC): Enter capacity...

New Battery Rating Units: CCA

New Battery Rating: Enter rating...
OE Spec Rating: 570

VIN: SUXZWOC57D0925750

Vehicle Year: 2013

Vehicle Make: BMW

Vehicle Model: XS

Vehicle Technology: Diesel

Battery Installation: Single Battery

Reset Next

Old Battery Type: FLOODED

Old Battery Capacity Units: Ah

Old Battery Capacity (Ah/RC): Enter capacity...

New Battery Type: FLOODED

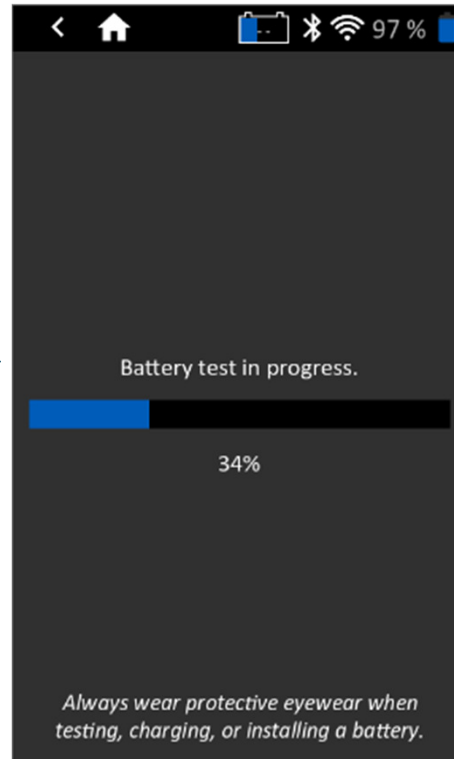
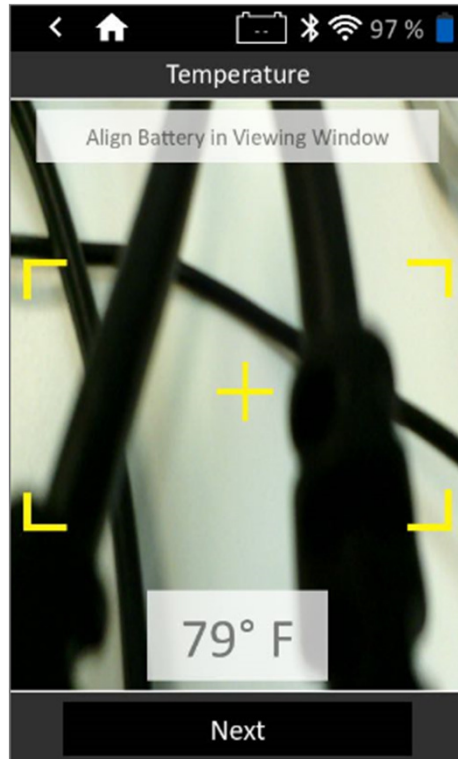
New Battery Capacity Units: Ah

New Battery Capacity (Ah/RC): Enter capacity...

New Battery Rating Units: CCA

New Battery Rating: Enter rating...
OE Spec Rating: 570

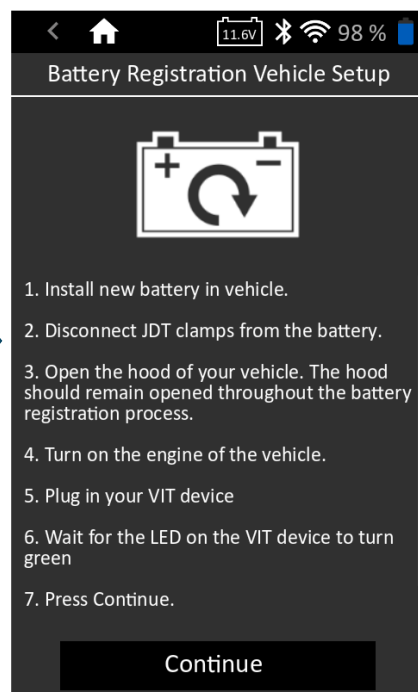
Battery Registration Process



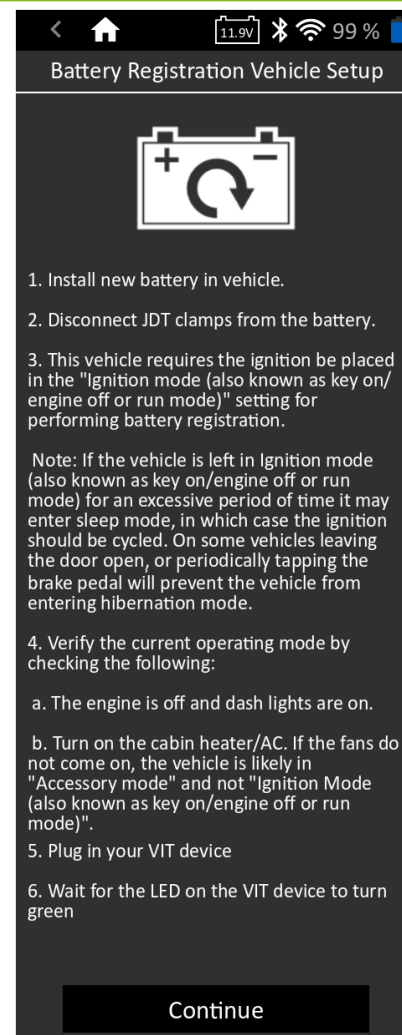
- Align battery in window to scan temperature
- The JDT completes a battery test on the new battery
 - The test is a 10 second conductance test
 - Only Replace decisions will prevent the JDT from moving forward with battery registration

Battery Registration Process

- After completing the battery test, one of two vehicle setup instructions will need to be followed
 - The setup instructions are based on the year and make of the vehicle
 - These instructions must be followed in order and exactly as shown
 - Failure to complete the instructions as shown will result in a failed battery registration
- REMINDER
 - Do not connect the new battery to the vehicle until instructed to do so
 - Do not connect the VIT to the OBDII port until instructed to do so
 - Place the vehicle in the proper ignition mode based on the instructions

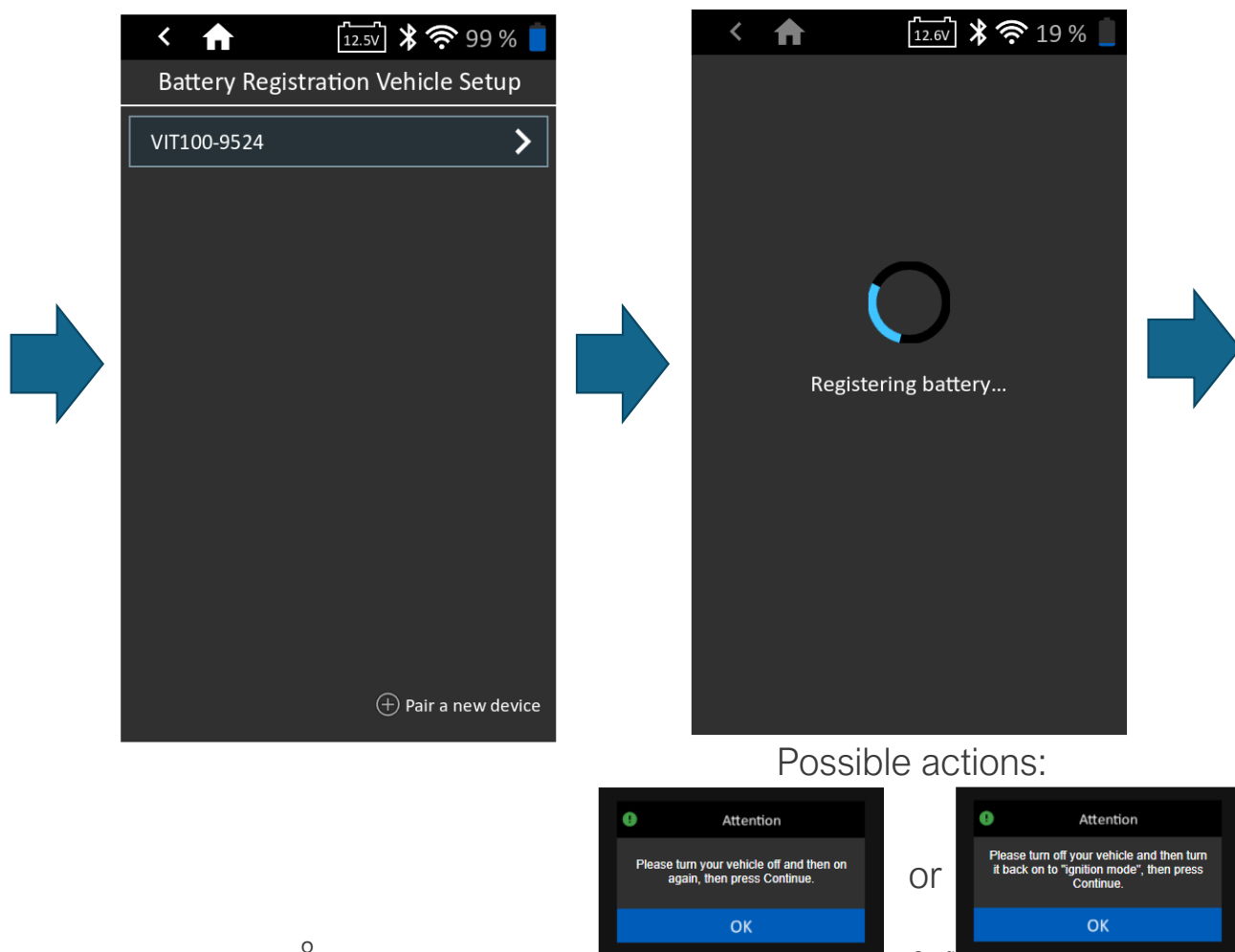


OR



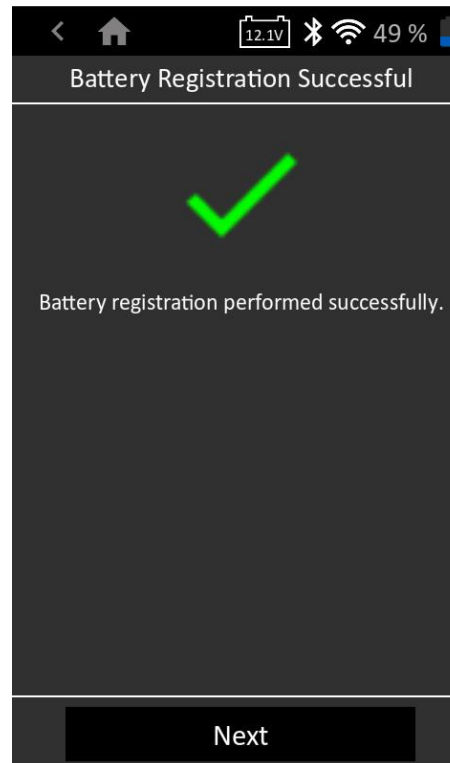
Battery Registration Process

- Select the VIT-100 device connect to the JDT
 - The serial number is located on the back label of the VIT
 - If no VIT is connected, tap “+ Pair a new device”
- The VIT will now attempt to register the battery
- Certain vehicles will prompt the user to turn the vehicle on and off several times or to change the ignition mode

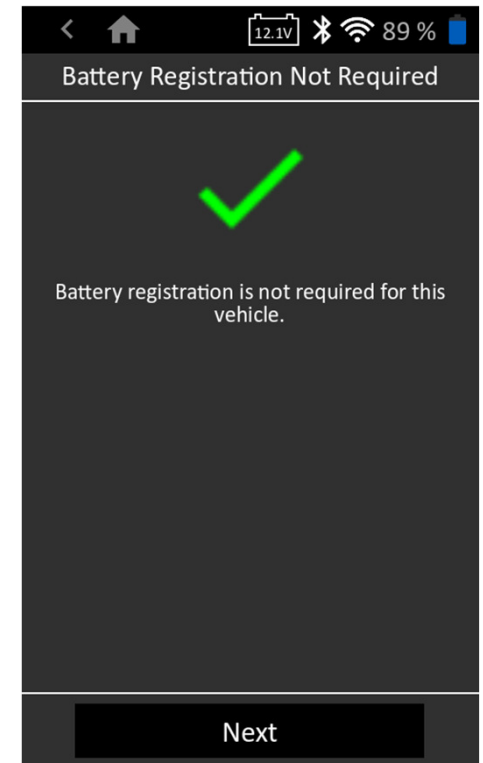


Battery Registration Process

- If the Vehicle Setup instructions were followed correctly, the JDT will display either:
 - Battery Registration Successful
 - Battery Registration Not Required
- Tap Next to finish the registration process

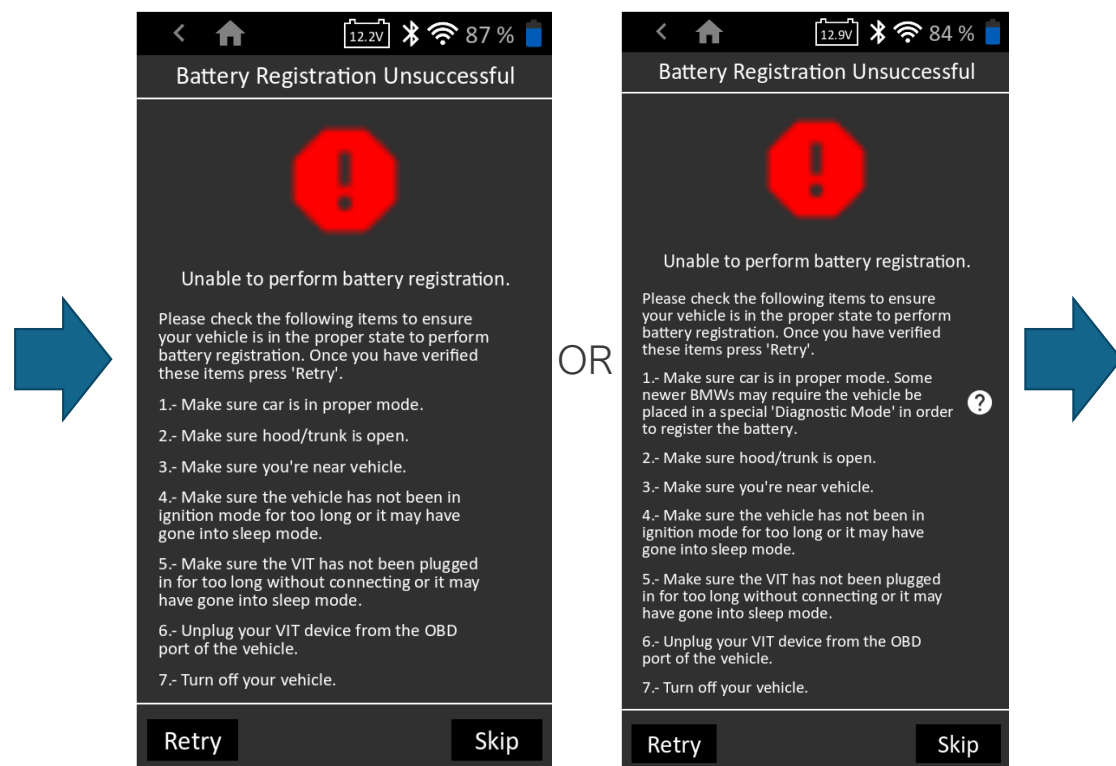


OR



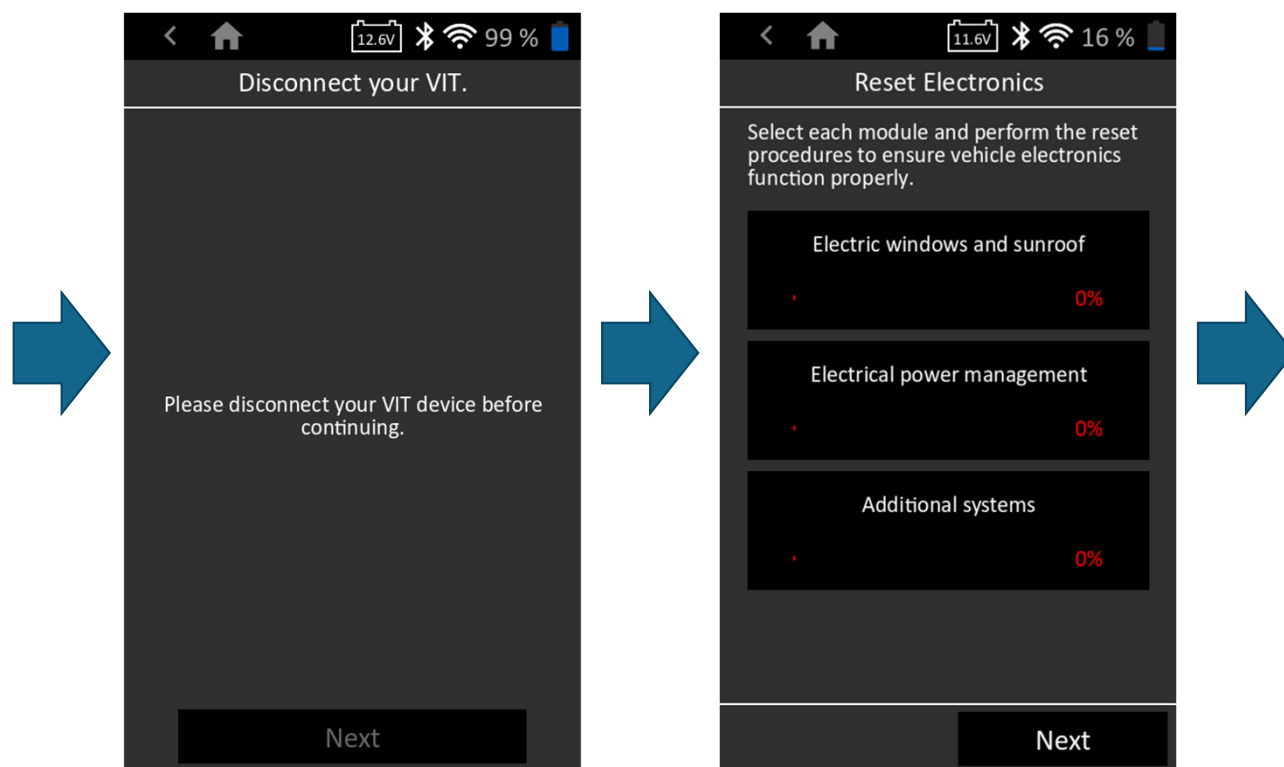
Battery Registration Process

- If the Vehicle Setup instructions were NOT followed correctly, the JDT will display “Battery Registration Unsuccessful”
- Review the setup instructions and make the necessary changes to the vehicle
- Tap “Retry”
- Only tap “Skip” if the battery registration fails after multiple attempts or the customer requests to stop
- If the battery registration is skipped, refer the customer to their local dealership to complete the registration process








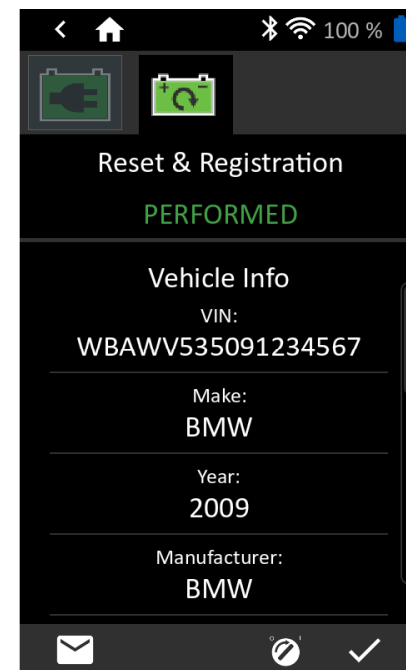
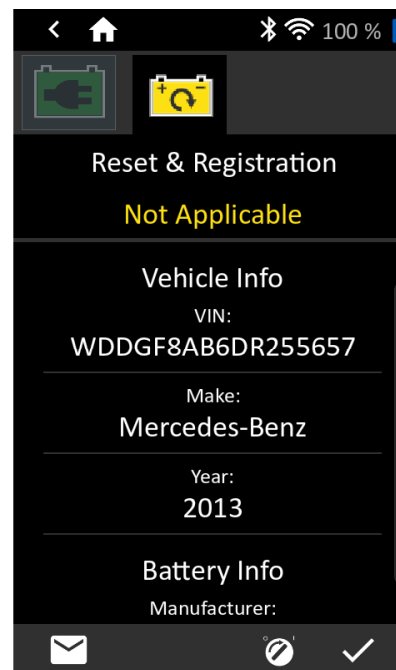
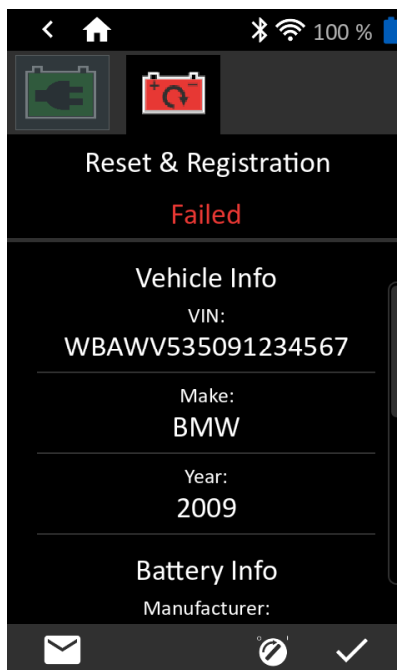
Battery Registration Process

- The battery registration process cannot be completed unless the VIT is removed from the OBDII port
 - Once the VIT is removed the “Next” button will highlight
 - Do NOT place the VIT anywhere in the vehicle after it has been removed
- Tap “Next”
- Certain vehicles will require electronics to be reset in order to function properly after replacing the battery
 - The JDT provides a checklist for each accessory
 - Each reset is a manual process
- Tap “Next”



Battery Registration Process

- Review Results
 - Tap  to review battery test results
 - Tap  to review registration results
- Registration Results
 - **Failed** – occurs if registration is skipped after failed attempt
 - **Not Applicable** – Battery registration not required
 - **Performed** – Battery Registration was successful
- Other Actions:
 - Tap  to email results
 - Tap  to complete a system test
 - Tap  to end the application



Keys to Success

- Before attempting the first battery registration:
 - Make sure the JDT-1 is on the correct software
 - Pair the VIT-100 with the JDT-1 using any vehicle available
- Do not discard the old battery until the battery registration process is complete
- Follow the onscreen instructions exactly as shown
 - Do not connect the battery to the vehicle until instructed to do so
 - Do not connect the VIT-100 to the OBDII until instructed to do so
 - Vehicle setups are different based on the Year and Make of the vehicle
 - Place the ignition in the proper mode base on the instructions
- Retry any failed battery registration but double check your setup
- After removing the VIT from the vehicle, do not leave it inside the vehicle
- Follow the onscreen instructions until the end of the screenflow